



EARLY EDGE
CALIFORNIA

2023 Year in Review

Report



Early Edge California



THANK YOU!

Early Edge California is pleased to share some top highlights of our work from 2023. These accomplishments would not have been possible without the generous support of our funders—thank you!

[Meet Our Funders >](#)





NEW VIDEOS



Early Edge for California's Children



In celebration of our 20th anniversary this year, Early Edge California launched, [Early Edge for California's Children](#), a video in which we share about our work and our vision for all young children to have access to high-quality Early Learning experiences.

In total, 500+ views since published!



Watch Governor Newsom's special video message about Transitional Kindergarten!



On January 4th, Early Edge partnered with Governor Gavin Newsom to present his [special video message](#) celebrating the expansion of Transitional Kindergarten (TK) to more children in 2023. The video recognizes the critical work of TK teachers and administrators and encourages families to enroll their child in the free, high-quality preschool program.

In total, 4.1K views since published!

“Sharing Their Voices: California’s FFN Providers”



During National Family, Friend, and Neighbor (FFN) Appreciation Week in September, Early Edge California launched a [new video series](#) to amplify the voices of FFN child care providers. “Sharing Their Voices: California’s FFN Providers,” is a 4-part series that features caregivers sharing about the work they do, their pride, their challenges, and what they need to support the children in their care.

In total, 3.6K views since published!



CA's DLL Identification Process Helps Teachers Support Young Children & Their Families



Early Edge California shared a [new video](#) promoting the benefits of the Dual Language Learner (DLL) identification process to California's state preschool teachers and administrators. The video was released on May 9th during the "DLL Support" webinar series hosted by the California Department of Education, Early Education Division (CDE, EED).

In total, 1.4K views since published!





LEGISLATIVE WINS



AB 393 (Rivas) was signed by Governor Newsom on October 8th!

We look forward to supporting the implementation of AB 393 in 2024.

This year, Early Edge California was proud to sponsor Assembly Bill (AB) 393 alongside [California Association for Bilingual Education \(CABE\)](#) and [Californians Together](#) to strengthen support for more Dual Language Learners (DLLs) in California's Early Learning and Care system.

[Read Our Statement >](#)

- AB 393 was included in [The Education Trust–West's The Equity 8 for 2023](#), a list of top eight state budget proposals and new legislation to advance educational equity and justice.
- Early Edge uplifted this critical legislation as it went through the legislative process by creating a [webpage](#), [support letter templates](#), and lobbying for support.



Our sponsored bill AB 1363 (Rivas) went into effect on January 1st!



Promotional Video

*CA's DLL Identification
Process Helps
Teachers Support
Young Children &
Their Families*

[Watch the video >](#)



DLL Support Webinar Series

Supported CDE with
promotion via the
creation of a social
media toolkit.

[Access the toolkit >](#)



DLL Support Webpage

Contributed relevant
content and resources to
CDE's DLL Support page
including MB 23-03.

[Visit the page >](#)



Media

Media coverage
promoting the bill's
implementation across
the state in outlets
including [EdSource](#)
and [Language
Magazine](#).



Report: *Implementation of AB 1363 - An Innovative Approach to Identifying Dual Language Learners (DLLs)*



In November, Early Edge California released [*Implementation of AB 1363 - An Innovative Approach to Identifying Dual Language Learners \(DLLs\)*](#), a new report that provides an overview of the development and implementation of AB 1363 in California as a tool for potential replication beyond our state.

This report outlines the background, development process, success, implementation, and its potential as a model for other states.





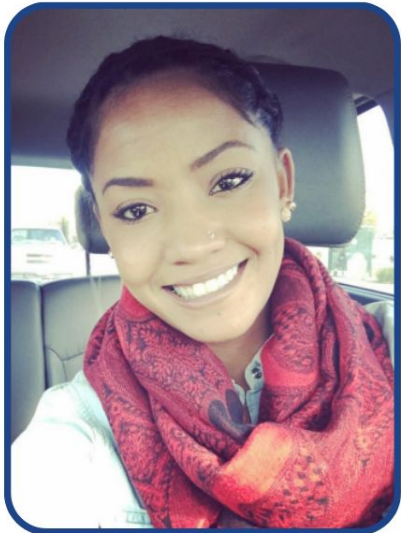
NEW INITIATIVES



California Leading from Home



Meet Antonia Nicole Harris



FFN care holds a special place in my heart. It's more than just a profession; it's a commitment to becoming an extended family for the children I care for. Every interaction is an opportunity to shape their lives positively.



Antonia is an FFN provider in San Jose who cares for 4 children ages 2-5, and has 2 children of her own ages 1-3.

This year, Early Edge California replicated Home Grown's Leading from Home program in California to develop a statewide cohort of Family, Friend, and Neighbor (FFN), or license-exempt, caregivers. Early Edge launched the [California Leading from Home program](#) in August with the successful inauguration of the first Community of Practice (CoP) meeting.

- [CoP #1: August 2023](#)
- [CoP #2: September 2023](#)
- [CoP #3: October 2023](#)
- [CoP #4: November 2023](#)

Early Edge also introduced a new series called "I'm an FFN Provider," which introduces the [2023-24 California Leading from Home cohort members](#) and celebrates their work as FFN providers.



2023 Educational Early Learning Tour

Early Edge California hosted a delegation of Early Learning champions and leaders from California for its [2023 Educational Early Learning Tour](#) in October.

- **Purpose:** *To learn how districts in Boston and New Jersey are successfully providing universal preschool within a mixed-delivery system.*
- This 3-day event included:
 - Site visits to high-quality programs
 - Panel discussions with local officials and experts



The delegation included State Superintendent of Public Instruction Tony Thurmond, Assemblymembers Kevin McCarty, Al Muratsuchi, and Luz Rivas, representatives from the Office of Governor Gavin Newsom, California Department of Education, and California Department of Social Services, labor representatives from the California Teachers Association, California School Employees Association, and SEIU Local 99, representatives from Heising-Simons Foundation, First 5 LA, and CSULA, and Early Learning and Care advocates from Child Care Resource Center, Learning Policy Institute, and UNITE-LA.



Brief: *Immediate Actions the Biden Administration Can Take for DLLs*



"Nearly 7.5 million children between birth and age five in the United States (one-third of all children in this age range) are Dual Language Learners (DLLs)."

In November, Early Edge California and fellow Dual Language Learner (DLL) policy leaders released, [*Immediate Actions the Biden Administration Can Take for DLLs*](#), a new set of federal recommendations on supporting DLLs now. The brief also includes a budget request for President Biden and his Administration.

Recommendations fall within the following categories:

- Governance
- Data
- DLL children with disabilities
- Workforce
- Assessments
- Technical assistance
- Supporting prenatal to age 3



Dual Language Learner (DLL) Field Building



Lunch and Learns in 2023 included a visit to Westminster School District to learn more about its dual immersion programs.

[Read the recap blog >](#)

Early Edge California and Catalyst California continued to build collective momentum and support capacity-building of existing and new partners in the ECE field to move DLL-specific recommendations from the [CA Master Plan for Early Learning and Care](#) forward.

DLL Master Plan Advocates convene for:

- Quarterly meetings
- Workgroups
 - Family Engagement Committee
 - Communications and Practitioners Committee
- Lunch and Learns including site visits
- The DLL Brain Trust



DLL Peer Learning Community (PLC)

Hosted by NIEER and MPI

This year, Early Edge California joined a nine month national Dual Language Learner (DLL) PLC.

- Hosted by: National Institute for Early Education Research (NIEER) & Migration Policy Institute (MPI)
- Included 9 states
- **Goal:** Shared learning and cross-collaboration to improve policies and systems for DLLs

On November 6th, NIEER released [*Envisioning, Planning, and Implementing Better Systems for Dual Language Learners*](#), which summarizes reflections from the DLL PLC.

Early Edge led the California cohort of the DLL PLC. The CA cohort worked to develop shared goals for improving DLL supports in California, which included a focus on 1) DLL identification and 2) Educator training and preparation.

The CA cohort includes:

- California Department of Education
- California Department of Social Services
- First 5 California
- First 5 LA
- Los Angeles County Office of Education
- Fresno Unified School District
- Californians Together
- Quality Start Los Angeles



Celebrating 1 Year: Advisory Group Leadership Council

The [Leadership Council “Ambassadors”](#) are lead participants from our Educator, Parent, and Family, Friend, and Neighbor (FFN) Advisory Groups, providing opportunities for deeper collaboration and impact.



This year, the Advisory Group Leadership Council celebrated one year of its formation with a special recognition for our dedicated Ambassadors during the November meeting. Early Edge California thanks the Ambassadors for their participation throughout the first year of the Leadership Council!

- January 30th: [First meeting of the year](#)
- June 12th: [Second meeting of the year](#)
- November 6th: [Third meeting of the year](#)



In-Person Meetings: Early Learning Educator Advisory Group



In April, Early Edge California returned to hosting [in-person meetings](#) since the pandemic for educators in the Los Angeles and Bay Area. This was a milestone moment that was much appreciated by both our participating educators and the Early Edge team.

During fall, Early Edge was able to meet in-person with the educators from the Fresno Educator Advisory Group in November and, once again, with the Los Angeles Educator Advisory Group in December.

Early Edge plans to continue in-person meetings next year with a scheduled meeting in January 2024 with the Bay Area Educator Advisory Group.





INTERNATIONAL PRESENCE





2023 World Forum on Education (Panama)

In May, Early Edge California Executive Director Patricia Lozano traveled to Panama City, Panama for the 2023 World Forum on Early Care and Education hosted by the World Forum Foundation.

The multi-day event was an opportunity to connect with Early Learning professionals and advocates from more than 80 countries to share inspiration and information on issues impacting children and families worldwide.

[Read the recap blog >](#)



Semana Magazine's 10th Annual Leaders for Education Summit (Colombia)

In September, Early Edge California Executive Director Patricia Lozano was invited by the U.S. Department of State as part of its U.S. Speaker Program to present on how Early Learning works in the United States at Semana Magazine's 10th Annual Leaders for Education Summit in Bogota, Colombia.

In addition to the Summit, Patricia also gave her presentation to undergraduate and graduate students from the schools of Education at Universidad Javeriana and Universidad El Bosque and met with several teams from Colombia's Ministry of Education.

[Read the recap blog >](#)





ORGANIZATIONAL UPDATES



Media Mentions

“This is a law [AB 393] that continues the work we are doing so that more programs have to identify bilingual children. There was already a law called AB 1363 that required or encouraged children who are in state preschools to be identified when they are bilingual.” —**Patricia Lozano, Executive Director, Early Edge California**



- English media: 22 mentions
- Spanish media: 10 mentions

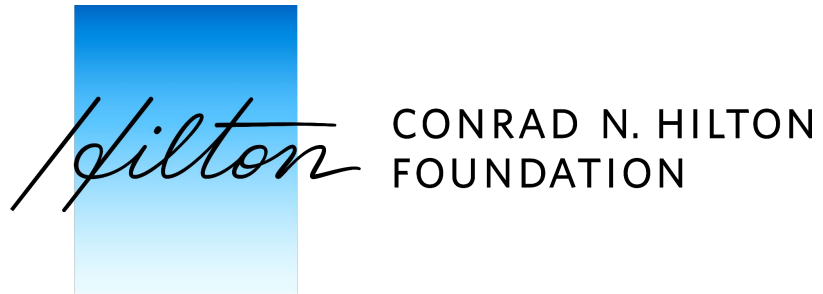
[See Our Media Mentions >](#)



32 total media mentions in 2023



New Funding



In May, Early Edge was awarded a [3-year grant](#) to increase licensed spaces for infants and toddlers in California through a public awareness campaign, policymaker education, and supports for the Early Learning and Care workforce.



In June, Early Edge received a [\\$3 million gift](#) from philanthropist MacKenzie Scott. This historic investment for Early Edge is the largest single donation ever received by the organization.

“This contribution validates our results over the last 20 years and will make a profound impact on our efforts moving forward.” –Patricia Lozano, Executive Director, Early Edge California





New Team Members

[Meet the Team >](#)



Andrew Avila
Policy Analyst
(Joined March 2023)



 **Nicole Barboza**
Operations Manager
(Joined November 2023)



❄️ HAPPY HOLIDAYS! ❄️

We look forward to what we will accomplish together in 2024!





Thank You!

CONTACT US



info@earlyedgecalifornia.org

Visit us at linktr.ee/earlyedgeca to learn more!

[See Our 2023 Mid-Year Review >](#)

