



AB 393 Social Media Toolkit

This social media toolkit provides sample materials you can use to show your support for **Assembly Bill (AB) 393 (Rivas)** with your California representatives and your network. It includes a list of bill and legislative resources, sample social media posts, and graphics.

Thank you for your partnership and support!

RESOURCES

- AB 393 website: <https://earlyedgecalifornia.org/ab-393-dual-language-learner/>
 - AB 393 sample support letter: <https://earlyedgecalifornia.org/ab-393-sample-support-letter/>
 - AB 393 fact sheet: https://earlyedgecalifornia.org/wp-content/uploads/2023/02/AB-393-Fact-Sheet_Final.pdf
 - California legislative information: https://leginfo.legislature.ca.gov/faces/billNavClient.xhtml?bill_id=202320240AB393
 - Find your California representative: <https://findyourrep.legislature.ca.gov/>
-

SAMPLE SOCIAL MEDIA POSTS

Use the hashtags **#AB393** and **#SupportDLLs** in your social media posts. Make sure to tag the bill authors and cosponsors (listed below) so we can get notified and reshare your posts.

Bill Authors:

	Asm. Luz Rivas	Asm. Joaquin Arambula
Facebook	@AsmLuzRivas	@AsmArambula
Instagram	@luzmrivas	@asmarambula
Twitter	@AsmLuzRivas	@AsmArambula

Bill Sponsors:

	Early Edge California	California Association for Bilingual Education (CABE)	Californians Together (CalTog)
Facebook	@EarlyEdgeCA	@CABEorg	@CaliforniansTogether
Instagram	@earlyedgeca	@go_cabe	@caltog
LinkedIn	@early-edge-california	@californiaassociationbilingualeducation	@californians-together
Twitter	@EarlyEdgeCA	@CABEBEBILINGUAL	@CalTog
YouTube	@earlyedgeca	@ITCABE	@californiantogether2459

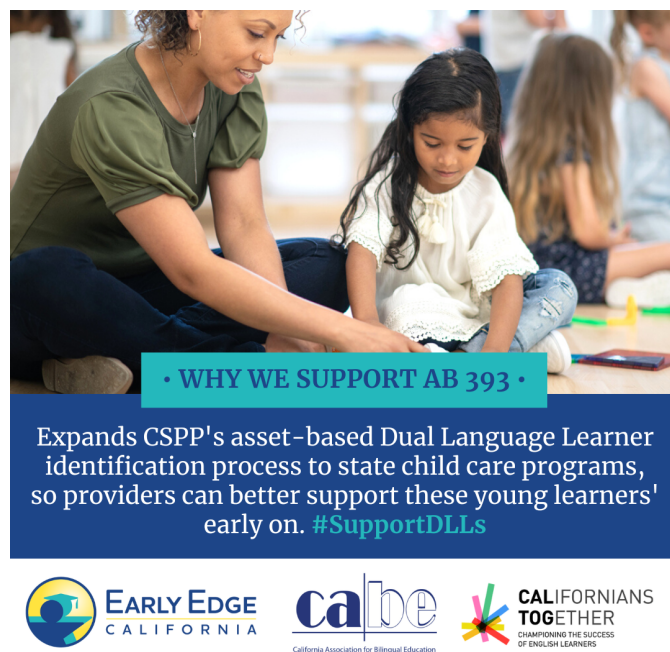
Sample Posts:

- #AB393 co-authored by Asm. Luz Rivas and Asm. Joaquin Arambula [TAG BILL AUTHORS] builds on the previous efforts of #AB1363 in implementing a standardized, asset-based process for identifying Dual Language Learners (DLLs) in state preschool by expanding it to state child care programs. Learn more: <https://earlyedgecalifornia.org/ab-393-dual-language-learner/> #SupportDLLs
- #AB393 co-authored by Asm. Luz Rivas and Asm. Joaquin Arambula [TAG BILL AUTHORS], and cosponsored by Early Edge California, California Association for Bilingual Education, and Californians Together [TAG BILL SPONSORS], takes a critical step in implementing the recommendations from the Governor's Master Plan for Early Learning and Care for supporting Dual Language Learners (DLLs). Learn how: <https://earlyedgecalifornia.org/ab-393-dual-language-learner/> #SupportDLLs
- #CAleg, support #AB393 by Asm. Luz Rivas and Asm. Joaquin Arambula [TAG BILL AUTHORS]! ✓ AB 393 aligns with California's positive shift to acknowledging bilingualism as a linguistic and cultural diversity asset. That's why it is supported by child care advocates like Early Edge California, California Association for Bilingual Education, and Californians Together [TAG BILL SPONSORS]. Learn more: <https://earlyedgecalifornia.org/ab-393-dual-language-learner/> #SupportDLLs
- #AB393 is supported by child care advocates like Early Edge California, California Association for Bilingual Education, and Californians Together [TAG BILL SPONSORS] because it engages families in understanding the benefits of bilingualism and supporting

their children in developing their home language. Learn more:
<https://earlyedgecalifornia.org/ab-393-dual-language-learner> #SupportDLLs

- #AB393, co-authored by Asm. Luz Rivas and Asm. Joaquin Arambula [TAG BILL AUTHORS], helps inform institutional and program policies and practices necessary to support the simultaneous development of a child's home language and English. Learn more: <https://earlyedgecalifornia.org/ab-393-dual-language-learner> #SupportDLLs

GRAPHICS





• WHY WE SUPPORT AB 393 •

Aligns with California's positive shift to acknowledging bilingualism as a linguistic and cultural diversity asset. [#SupportDLLs](#)



EARLY EDGE
CALIFORNIA



California Association for Bilingual Education



CALIFORNIANS
TOGETHER
CHAMPIONING THE SUCCESS
OF ENGLISH LEARNERS



• WHY WE SUPPORT AB 393 •

Engages families in understanding the benefits of bilingualism and supporting their children in developing their home language. [#SupportDLLs](#)



EARLY EDGE
CALIFORNIA



California Association for Bilingual Education



CALIFORNIANS
TOGETHER
CHAMPIONING THE SUCCESS
OF ENGLISH LEARNERS



• WHY WE SUPPORT AB 393 •

Helps inform institutional and program policies and practices necessary to support the simultaneous development of a child's home language and English. [#SupportDLLs](#)



EARLY EDGE
CALIFORNIA



California Association for Bilingual Education



CALIFORNIANS
TOGETHER
CHAMPIONING THE SUCCESS
OF ENGLISH LEARNERS



• WHY WE SUPPORT AB 393 •

Supports more Dual Language Learners in state programs by systematizing process for CSPP, CCTR, and CMIG. [#SupportDLLs](#)



EARLY EDGE
CALIFORNIA



California Association for Bilingual Education



CALIFORNIANS
TOGETHER
CHAMPIONING THE SUCCESS
OF ENGLISH LEARNERS